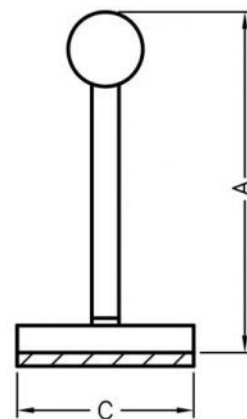
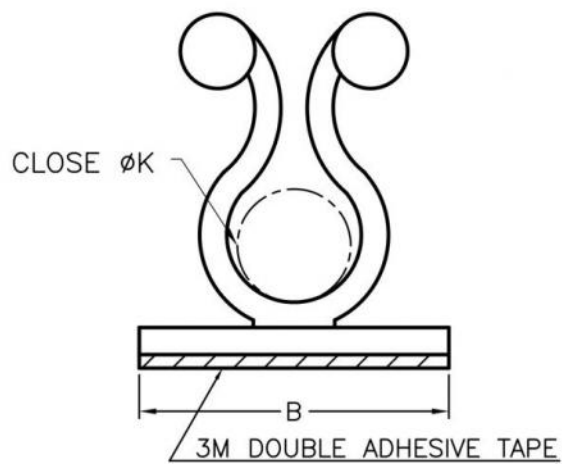


## WEBSITE PHOTOS



This dwg is for reference only, Actual dwg should be based on formal engineering dwg issued by Kang Yang.



A	B	C	K
26.2	20.0	14.0	8.5

- 1.It is normal if it is shrinking.
- 2.All measurement does not include gate which raises under 0.3mm.
- 3.The adhesive tape is cut by hand ,it is normal if there is a not unified edge.
- 4.The Height is not include the releasing paper and adhesive tape ' s thickness.
- 5.Please peel off the paper from backing backing lightly to avoid tear off the coating and make bubbling.



康揚企業股份有限公司  
KANG YANG HARDWARE ENTERPRISE CO., LTD.  
康揚塑膠(東莞)有限公司  
KANG YANG PLASTIC(DONG GUAN )CO.,LTD.  
康哲電腦配件(吳江)有限公司  
KANG CHE COMPUTER COMPONENTS(WUJIANG) CO.,LTD.

PART NUMBER			KL-2			SPEC. DWG.																				
TITLE									WIRE HOLDER																	
MATERIAL						NYLON 66(UL) 94V-0						COLOR			BLACK											
SIZE			A4			SCALE			2:1			UNIT			mm			CHECK			Z.C					