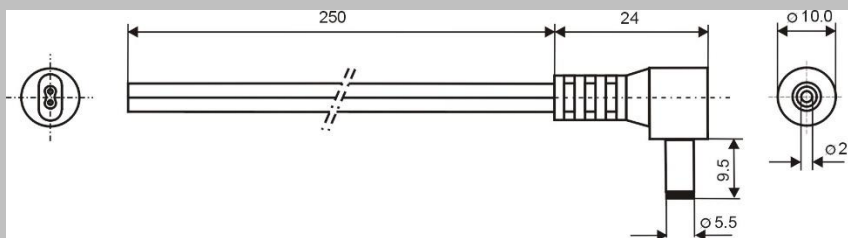




**Specification:**

Model	<b>DC.CAB.2201.0025.E</b>
DC Plug	5,5x2,1 mm
Recommended voltage	0 - 48V
Max Current	5A
Dielectric Strength	500 VDC
Operating temperature	-20°C to +70°C
Cord Length	250 mm
Cable Diameter	2x2mm
Wire Diameter	2x0,5mm <sup>2</sup>
ROHS	+



**Made in PRC**