

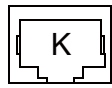
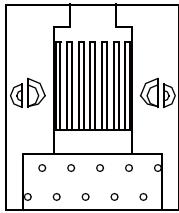
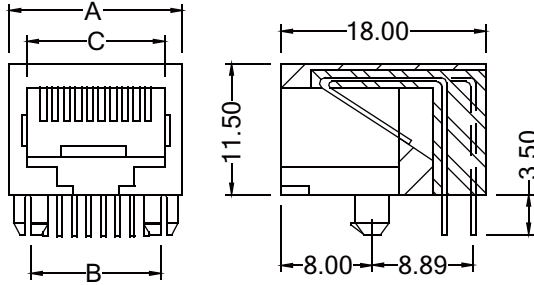
CONNECTORS MANUFACTURER



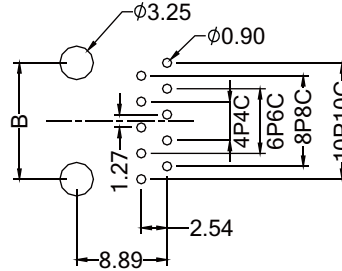
Modular Jack Side Entry H=11.5 W=18.0

Material & Finish

Housing: P.B.T, UL 94V-0, Black
 Contact :0.35mm Thickness Phosphor Bronze,
 Gold Plated Over Nickel on Contact Area,
 Tin plated over Nickel on solder area.



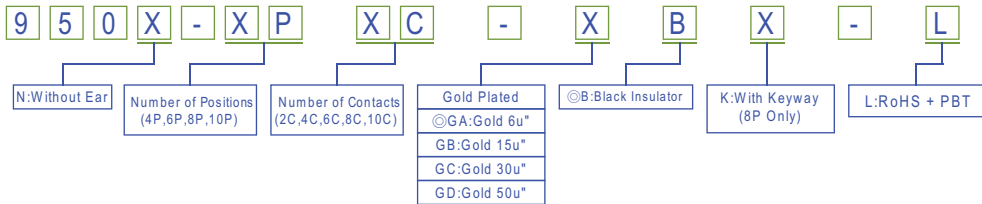
With keyway



Recommended PCB Layout
 (PCB TOLERANCE ±0.05)

Position	Contacts	A	B	C
4P	4C	11.20	7.62	7.80
6P	2C/4C/6C	13.20	10.16	10.00
8P	8C	15.20	11.43	12.00
10P	10C	15.20	11.43	12.00

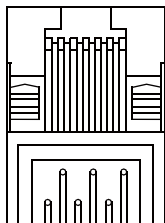
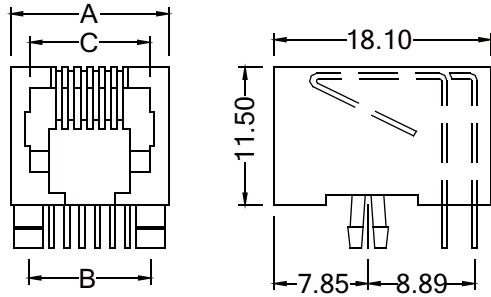
Order Information



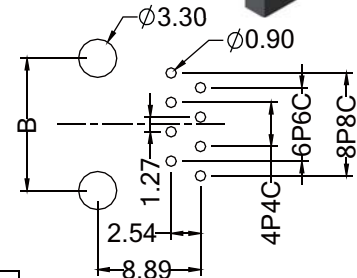
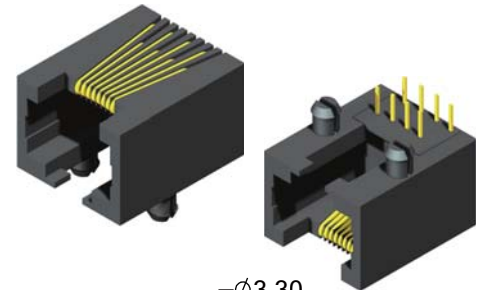
Modular Jack Side Entry H=11.5 W=18.1

Material & Finish

Housing: P.B.T, UL 94V-0, Black
 Contact :0.45mm Thickness Phosphor Bronze,
 Gold Plated Over Nickel on Contact Area.

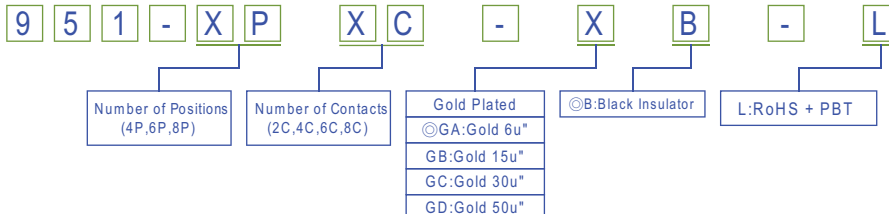


Position	Contacts	A	B	C
4P	4C	11.00	7.62	7.90
6P	2C/4C/6C	13.20	10.16	9.90
8P	8C	15.30	11.43	12.00



Recommended PCB Layout
 (PCB TOLERANCE ±0.05)

Order Information



Modular Jack

RoHS