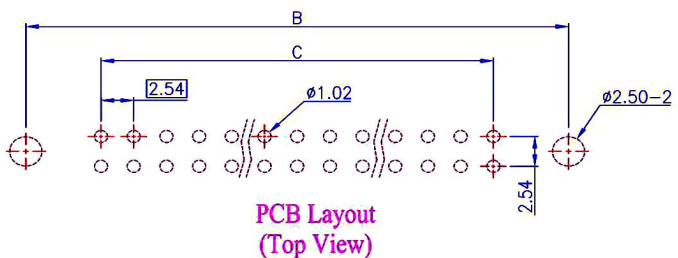
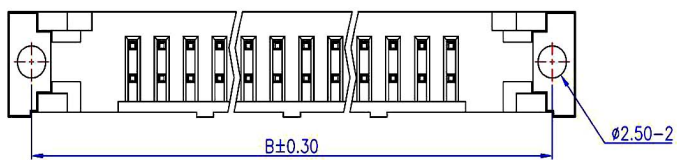
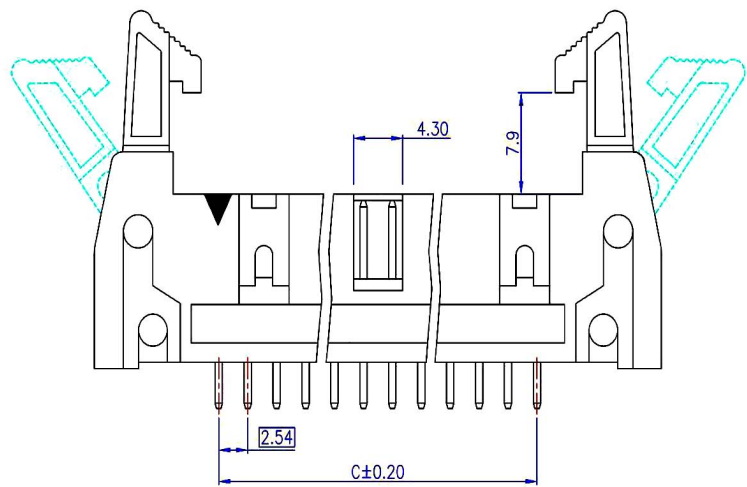
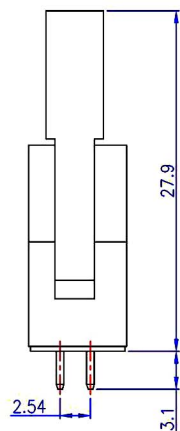
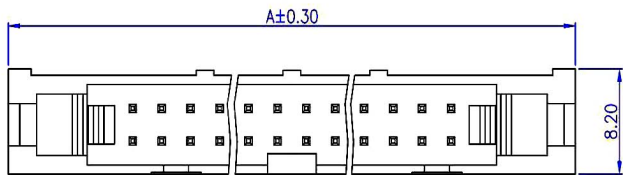


1 2 3 4 5 6 7 8

A
B
C
D
E
F
G
H



Material and Finish

1. Housing: PBT (UL94V-0), Black.
2. Terminal: Sq. 0.64mm Copper Alloy, Gold Plating.

Electrical Characteristics

1. Current Rating: 3.0 Amp. Max..
2. Dielectric Withstand Voltage:
1000V AC RMS for 60Seconds.
3. Insulation Resistance:
1000M Ohms Min. at 1000V DC.

Mechanical Characteristics

1. Operating Temperature: -55°C ~ +105°C

Dimensions							
Pos.	A	B	C	Pos.	A	B	C
10	32.00	27.94	10.16	26	52.32	48.26	30.48
12	34.54	30.48	12.70	30	57.40	53.34	35.56
14	37.08	33.02	15.24	34	62.48	58.42	40.64
16	39.62	35.56	17.78	40	70.10	66.04	48.26
20	44.70	40.64	22.86	50	82.80	78.74	60.96
24	49.78	45.72	27.94				

RoHS Compliant		HSM 玄茂科技股份有限公司 HSIUAN MAO TECHNOLOGY CO., LTD.	
APPD. 核准 Betty		TOLERANCE 容許公差 .0 ± 0.30 .00 ± 0.20 ANG. ± 3°	PART NAME 品名 FULLY SHROUDED HEADER ASSEMBLY 2.54mm X 2.54mm XXP LONG LOCK STRAIGHT TYPE GOLD FLASH PLATING BLACK COLOR ROHS
DWG. 製圖 Betty	SCALE 比例 參考	UNIT 單位 M M	PART NO. 料號 C3000-XXSLGB00R
DATE 制表日 2012/11/01	PAGE 張數 1 OF 1	REV. 版次 A	

1 2 3 4 5 6 7 8