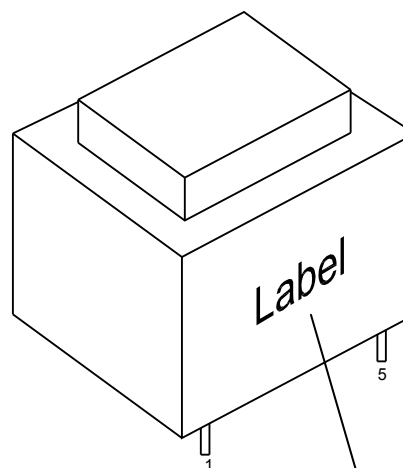
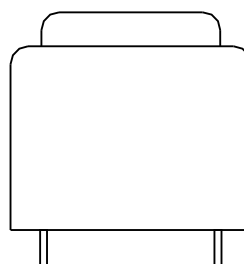
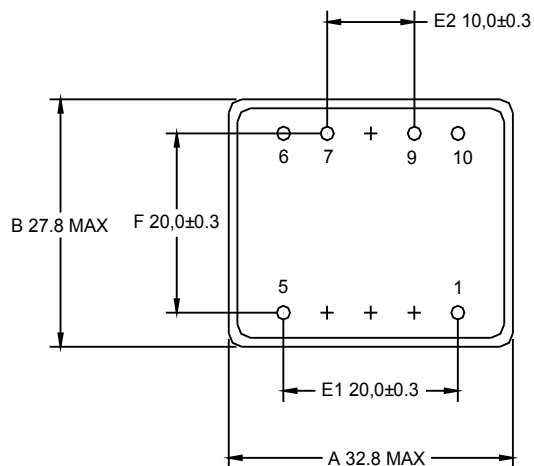
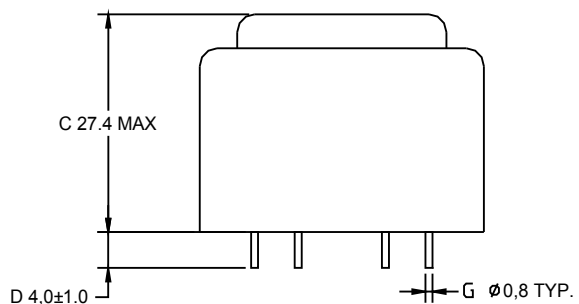


TR Z02.00/2x12b II

1. Physical Dimension (UNIT: mm)



Label for the transformer TR Z02.00/2x12b II. The label includes the μ's MICROS logo, technical specifications, and safety symbols.

	TR Z02.00/2x12b II
	PRI 230V~ 50/60Hz 1-5
	SEC 12V~ 1.0VA 6-7
	12V~ 1.0VA 9-10
	ta 70/B

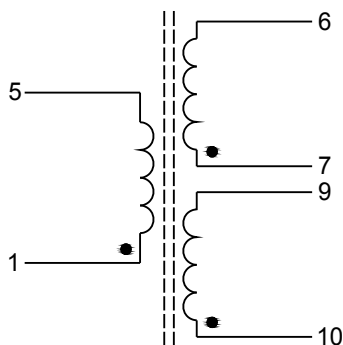
TR Z02.00/2x12b II

1. SAFETY STANDARD: EN61558 CORE SIZE: EI-30
2. ELECTRICAL PERFORMANCE:
 - 2-1. PRIMARY RATED VOLTAGE: AC 230 V / 50 Hz
EXCITING CURRENT: 11 mA MAX. LOSS POWER: 0.8 W MAX.
 - 2-2. SECONDARY RATED VOLTAGE AND CURRENT:

	UNLOAD VOLTAGE	LOADING VOLTAGE	RATED CURRENT	DC RESISTANCE
P: 1--5				2420 Ω ± 10%
S1: 6--7	21.3VAC MAX	12VAC ± 10%	83mA	59 Ω ± 15%
S2: 9--10	21.3VAC MAX	12VAC ± 10%	83mA	52 Ω ± 15%

3. INSULATION RESISTANCE TEST:
500V DC 100MΩ min. FOR 1 MIN. (PRODUCTION LINE FOR 2S.) (PRI-SEC. & PRI.-CORE)
4. HI-POT TEST:
SHALL WITHSTAND WITHOUT BREAKDOWN

AC 3.75 KV FOR 1 MIN. OR AC 4.2 KV FOR 1S. (PRI.-SEC. & PRI.-CORE.)
(CUT-OFF CURRENT 1 mA)
5. TEMPERATURE RISE TEST: (Ta=25°C INPUT 230V 50Hz)
PRI. & SEC. WINDING'S TEMPERATURE RISE 45°C MAX. AT RATED LOAD. (RESISTANCE METHOD)
6. ELECTRICAL SCHEMATIC:



7. MAJOR MEASUREMENT FACILITIES:
 - A. DC-RESISTANCE METER: TH2512B
 - B. VOLTMETER: GDW4033A
 - C. AMPEREMETER: GDW4033A
 - D. TURN RATIO DETECTOR: YG-108R
 - E. HI-POT TESTER: CS5603
 - F. INSULATION-RESISTANCE METER: CS5603
 - G. MILLIVOLTMETER: FLUCK 287
 - H. MULTI-FUNCTION OSCILLOSCOPE: DS-8608A
8. THE ABOVE-MENTIONED MEASUREMENT IS BASED ON THE BEGINNING OF AMBIENT TEMPERATURE.
9. Net Weight: 100 g/PCS