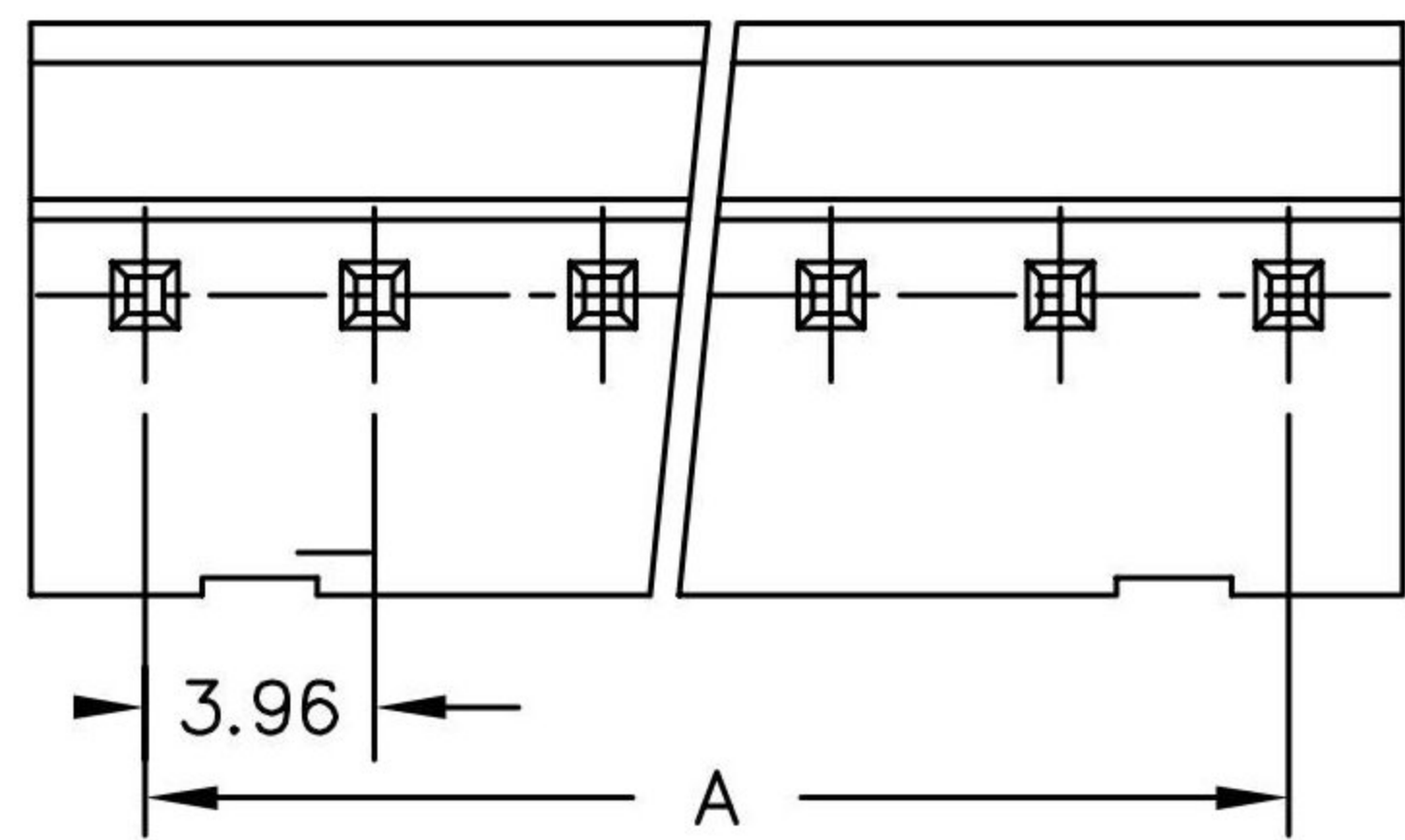


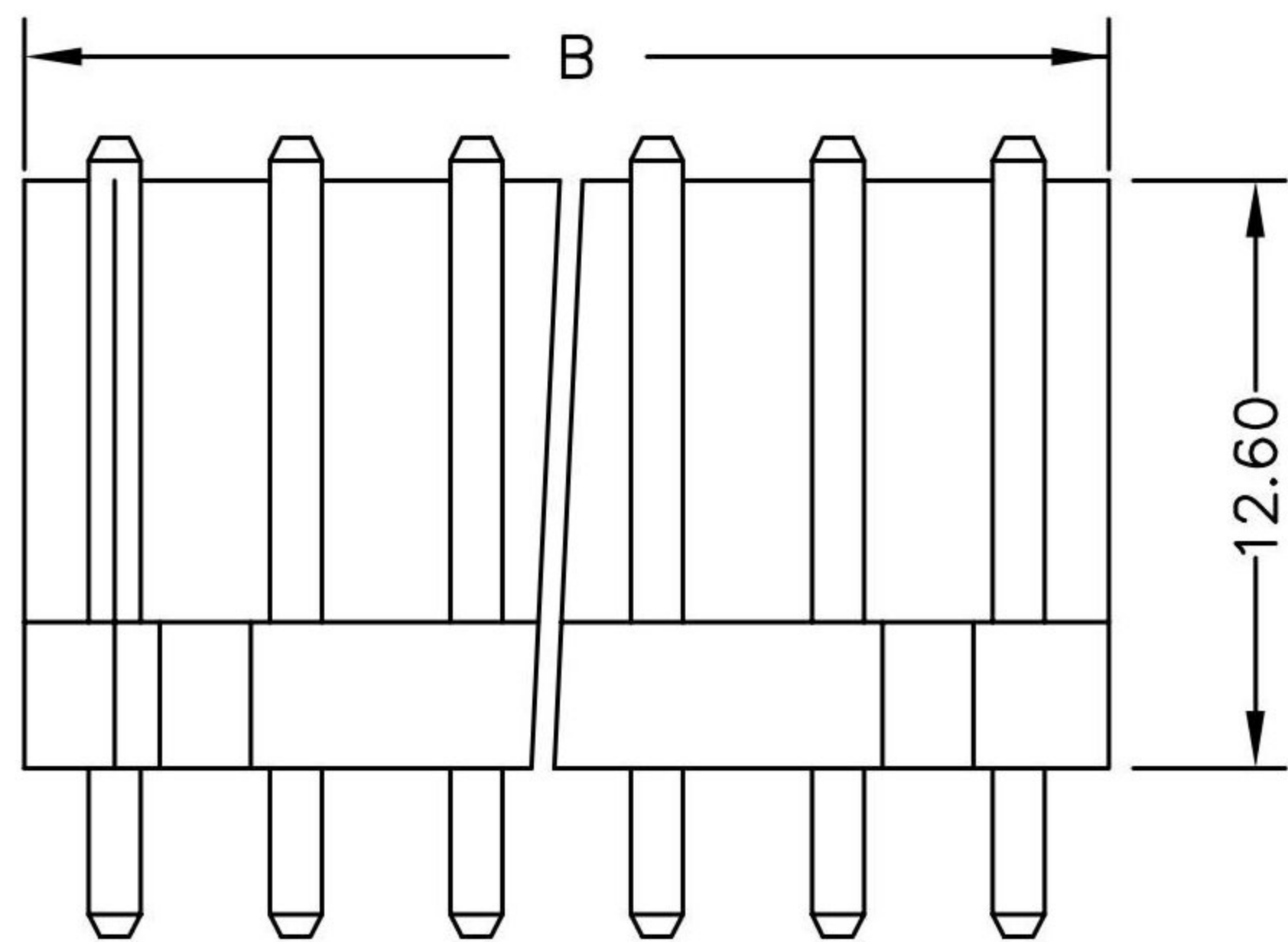
1 2 3 4 5 6 7 8

A



B

C

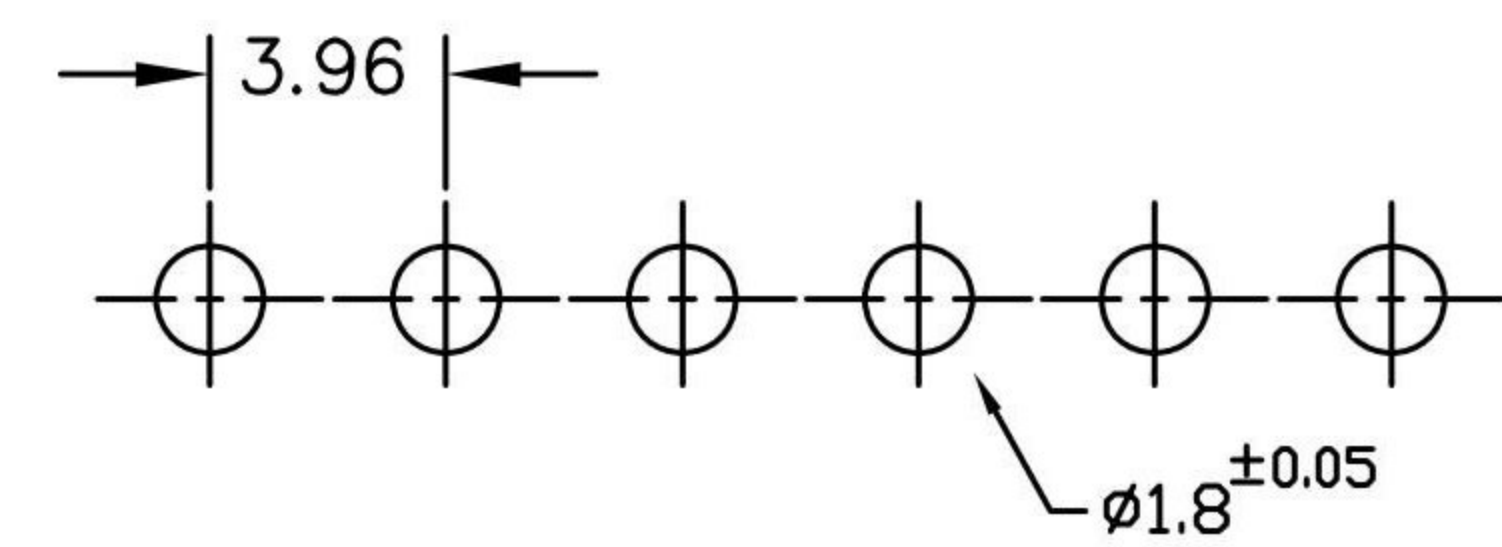


D

E

F

G



RECOMMENDED P.C.BOARD HOLE DIMM.

H

1 2 3 4 5 6 7 8

SPECIFICATIONS

Electrical

Current Rating: 5A AC, DC

Voltage Rating: 250V AC, DC

Operating Temp.: -25°C ~ +85°C

Insulation Resistance: 1000MΩ/ min.

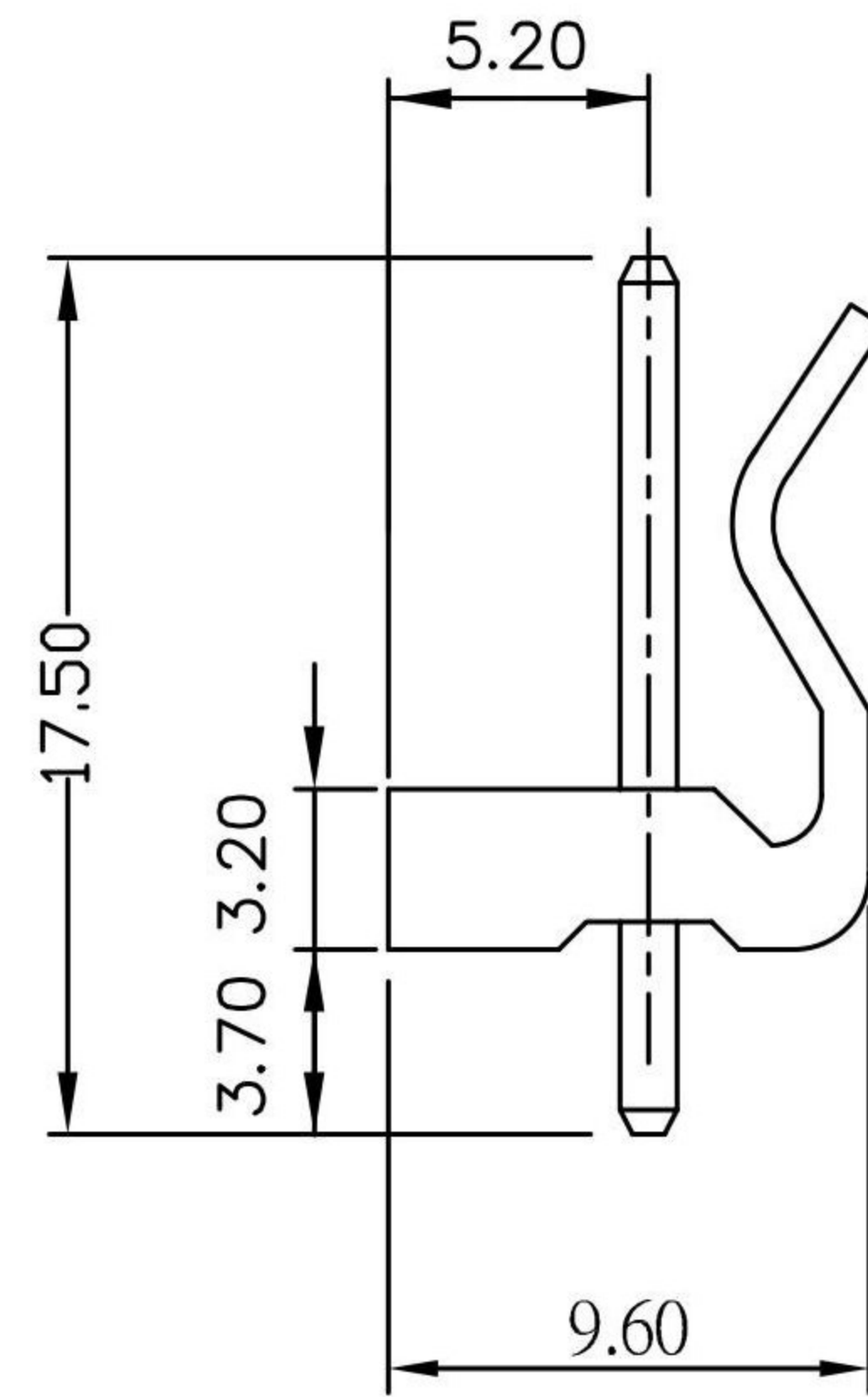
Dielectric Withstanding Voltage: 1500V AC/ min.

Contact Resistance: 10mΩ/ max.

Material

Insulator : Nylon66, UL94V-2

Terminal : Brass / Tin-Plated



Poles	Dimension mm (in.)	
	A	B
2	3.96	7.92
3	7.92	11.88
4	11.88	15.84
5	15.84	19.80
6	19.80	23.76
7	23.76	27.72
8	27.72	31.68
9	31.86	35.64
10	35.64	39.60
11	39.60	43.56
12	43.56	47.52
13	47.52	51.48
14	51.48	55.44
15	55.44	59.40
16	59.40	63.36
17	63.36	67.32
18	67.32	71.28
19	71.28	75.24
20	75.24	79.20

RoHS Compliant		HSM 玄茂科技股份有限公司 HSUAN MAO TECHNOLOGY CO., LTD.	
APPD. 核准 Betty	SCALE 比例 參考 UNIT 單位 MM PAGE 張數 1 OF 1	TOLERANCE 容許公差 .0 ± 0.5 .00 ± 0.35 ANG. ± SIZE. 紙張尺寸 A4 REV. 版次 B	PART NAME 品名 3.96mm WAFER STRAIGHT TYPE 1XXXP WITH LOCKING RIBS TIN PLATED WHITE COLOR ROHS
DATE 制表日 2012/04/20	PART NO. 料號 W2400-XXPSYTW0R		

A

B

C

D

E

F

G

H