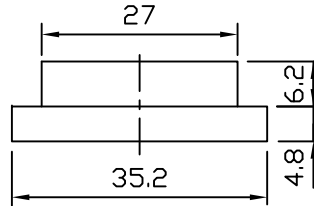


Panel hole size

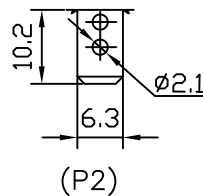
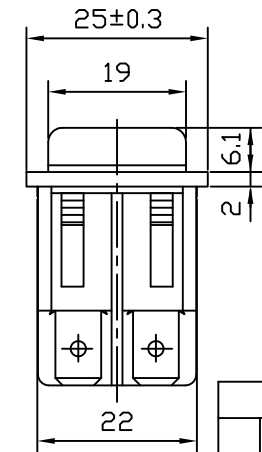
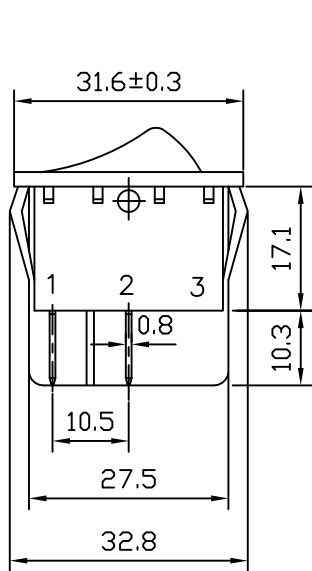


WP-RL2-3  
WATERPROOF CAP

SPECIFICATION:

- 1.RATING:16A 125VAC UL C-UL  
16(4)A 250VAC T85 VDE
- 2.CIRCUIT:ON-OFF
- 3.CONTACT RESISTANCE:30m OHMS Max
- 4.INSULATION RESISTANCE:DC500V 100M OHMS Min
- 5.WITHSTND VOLTAGE:AC 1500V 1Minute
- 6.ELECTRICAL LIFE:10000Cycles at Full Load

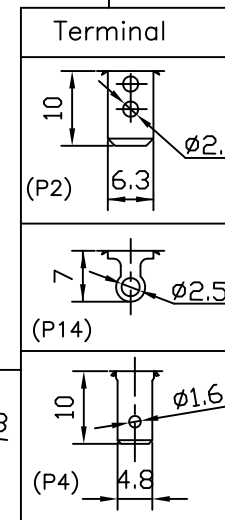
RL2-3-E-□-C-BR-2-P2-2-WP



Function	
A	4P ON-OFF
B	6P2 ON-ON
C	6P3 ON-OFF-ON
D	6P2 ON-(ON)
E	4P W/LAMP
F	6P2 W/LAMP
G	6P3 ON-OFF-(ON)
C-DM	6P3 (ON)-OFF-(ON)

Color Housing/Cap	
B	Black
W	White
R	Red
O	Orange
G	Green
BU	Blue

Cap Printing	
0	None
1	
2	
3	
4	
5	
6	
7	
8	
28	

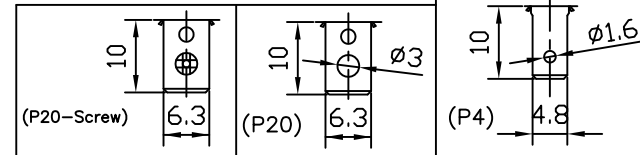


WATERPROOF CAP	
	Nothing
WP	WP-RL2-3

LIGHT Voltage	
	NOTHING
1	110VAC
2	220VAC
3	12VDC
4	24VDC

RATING	
	16(4A) 250V
	16A 125V
	8A 250V
H	16(8)A 250V

Cap Type	
A	Flat
C	Soft Line
BD	W/Round Len



UNLESS OTHERWISE SPECIFIED  
GENERAL TOLERANCES  
0.5~6 = ±0.3  
>6~30 = ±0.6  
>30~120 = ±0.8



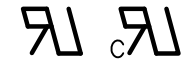
RL2-3-E-C-BR-2-P2-2 ON-OFF 4P W/Lamp DPST  
RL2-3-E-BD-BBR-0-P2-2 ON-OFF 4P W/Round Len

NO.	DESCRIPTION	QTY	MATERIAL	SPECIFICATION	REMARK
DRAW BY	CHUN	022012	SCALE	1 : 1	
DEGN BY	YANG		UNIT	MM	
APPD BY	RAY				
DATE	DRAWG BY	REVISED			ITEM NO. RL2-3 TITLE ROCKER SWITCH DWG NO. RL2-3-CN05-TN00-A2

同利企業有限公司

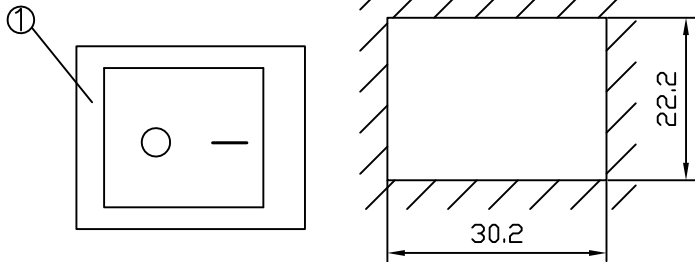
TELE LONG ENTERPRISE CO.,LTD  
FAX. 886-6-2530232

E-mail:rayyang@seed.net.tw

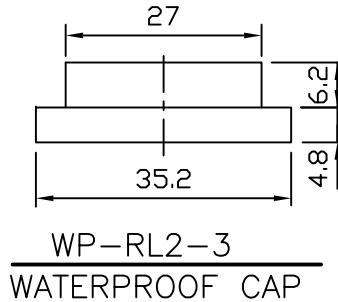


SPECIFICATION:

- 1.RATING:16A 125VAC UL C-UL  
16(4)A 250VAC T85 VDE
- 2.CIRCUIT:ON-OFF-ON
- 3.CONTACT RESISTANCE:30m OHMS Max
- 4.INSULATION RESISTANCE:DC500V 100M OHMS Min
- 5.WITHSTND VOLTAGE:AC 1500V 1Minute
- 6.ELECTRICAL LIFE:10000Cycles at Full Load



Panel hole size



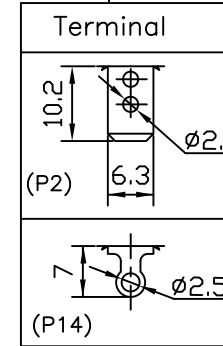
WP-RL2-3  
WATERPROOF CAP

RL2-3-E-C-BR-2-P2-2-WP

Function	
A	4P ON-OFF
B	6P2 ON-ON
C	6P3 ON-OFF-ON
D	6P2 ON-(ON)
E	4P W/LAMP
F	6P2 W/LAMP
G	6P3 ON-OFF-(ON)
C-DM	6P3 (ON)-OFF-(ON)
A-SM	4P (ON)-OFF

Color Housing/Cap	
B	Black
W	White
R	Red
O	Orange
G	Green
BU	Blue

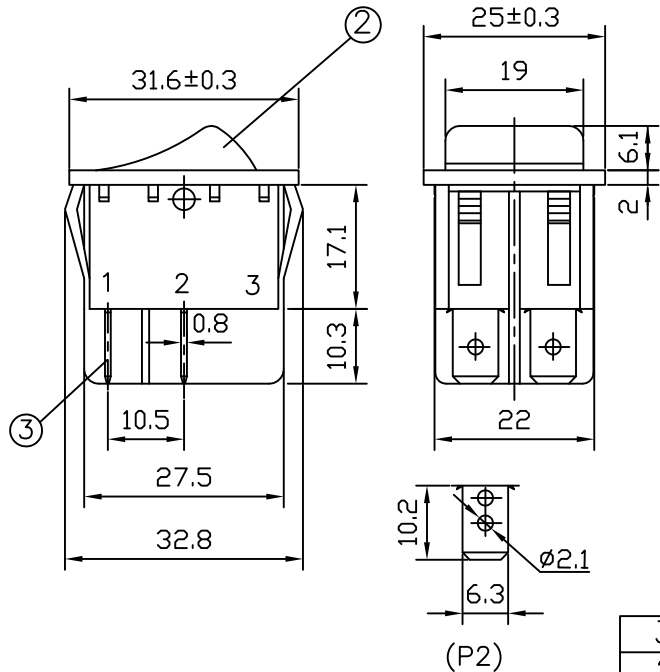
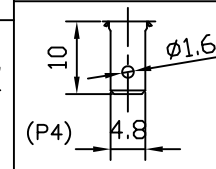
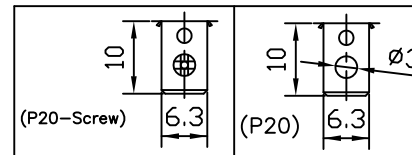
Cap Printing	
0	None
1	
2	
3	
4	
5	
6	
7	
8	
28	



WATERPROOF CAP	
	Nothing
WP	WP-RL2-3

LIGHT Voltage	
	NOTHING
1	110VAC
2	220VAC
3	12VDC
4	24VDC

Cap Type	
A	Flat
C	Soft Line
BD	W/Round Len



UNLESS OTHERWISE SPECIFIED  
GENERAL TOLERANCES  
0.5~6 = ±0.3  
>6~30 = ±0.6  
>30~120 = ±0.8

3	TERMINAL		COPPER		
2	ROCKER	1	Nylon 66	PC	
1	HOUSING	1	Nylon 66		
NO.	DESCRIPTION	QTY	MATERIAL	SPECIFICATION	REMARK

DRAW BY	CHUN	11	13	12	SCALE	1 : 1	PROJ		ITEM NO.	RL2-3
DEGN BY	YANG								TITLE	ROCKER SWITCH
APPD BY	RAY								DWG NO.	RL2-3-CN05-A1

DATE	DRAWG BY	REVISED	△

同利企業有限公司

TELE LONG ENTERPRISE CO.,LTD  
FAX. 886-6-2530232