

CR2032

LITHIUM MANGANESE DIOXIDE



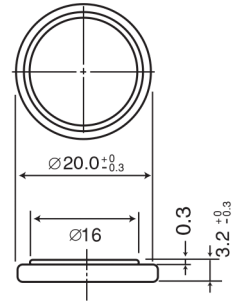
Features & Benefits

- Good pulse capability
- High discharge characteristics
- Stable voltage level during discharge
- Long-term reliability

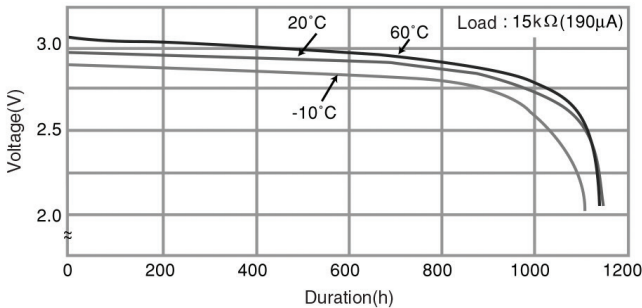
Specifications

Nominal Capacity:	225 mAh
Nominal Voltage:	3V
Weight:	2.9g
Operating Temperature:	-30°C - +60°C

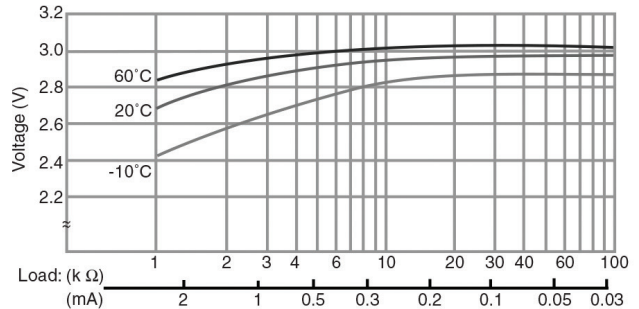
Dimensions



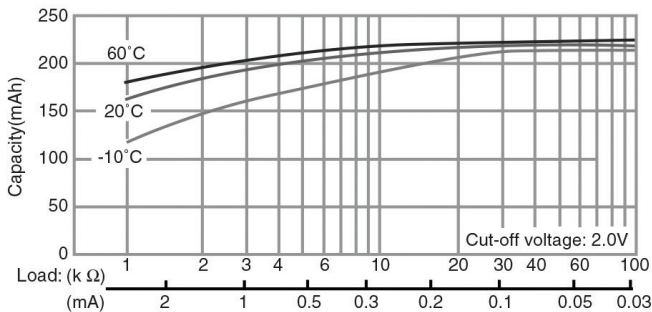
Temperature Characteristics



Operating Voltage vs. Load Resistance (voltage at 50% discharge depth)



Capacity vs. Load Resistance



⚠ WARNING

Serious harm in as little as 2-hours if swallowed. **KEEP AWAY FROM CHILDREN.** Seek immediate medical help if swallowed. Have the doctor call the poison center at 1-(800) 222 1222.

Product manufacturers should design their products to meet the safety requirements of Annex I of UL60065 or equivalent standards.

For more information on how Panasonic can assist you with your battery power solution needs call **877-726-2228**, visit www.na.industrial.panasonic.com/products/batteries or e-mail oembatteries@us.panasonic.com.

The data in this document is for descriptive purposes only and is not intended to make or imply any guarantee or warranty.

Mouser Electronics

Authorized Distributor

Click to View Pricing, Inventory, Delivery & Lifecycle Information:

Panasonic:

[CR2032](#) [CR-2032/HFN](#) [CR-2032/F2N](#) [CR-2032/HF1N](#) [CR-2032/HSN](#) [CR-2032/VCN](#) [CR-2032/HU3N](#) [CR-2032/VBN](#) [CR-2032/GUN](#) [CR-2032/GVFN](#) [CR-2032/HGN](#) [CR-2032/HMN](#) [CR-2032/VC1N](#) [CR-2032L/F1N](#)