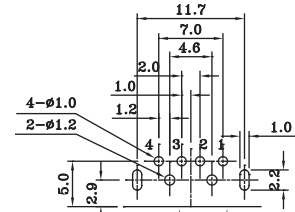
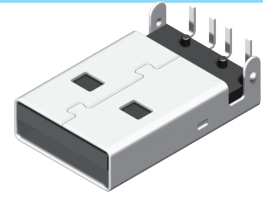
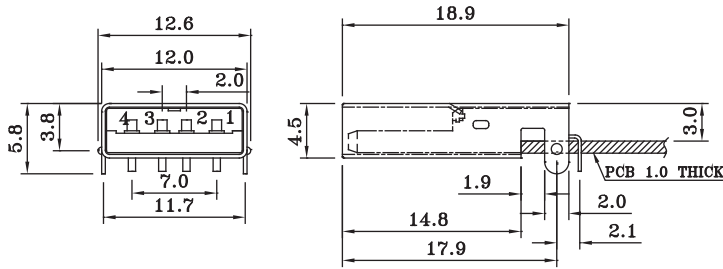




USB A Type Male Dip 90° 4P



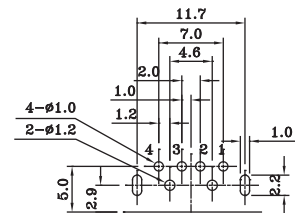
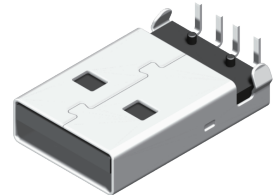
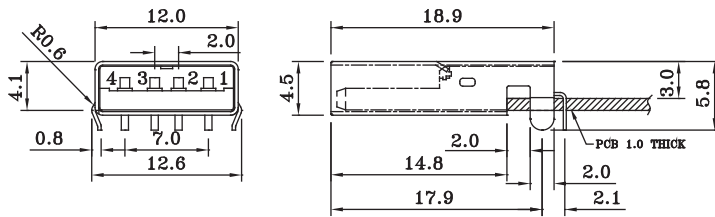
EDGE PCB
COMPONENT SIDE
(PCB LAYOUT)

No.	Name	Q'ty	Material	Remarks & Thickness	Finish
1	Housing	1	Nylon 9T G.F.		White/Black
2	Pin Term.	4	Copper Alloy T0.25	Ni:1~1.5u; Tin:3u. Gold:1~3u	Gold/Tin Plated
3	Shell	1	Brass T:0.3	Ni:2~3u	Nickel Plated

P/N.:5US2A09RM-104S0XUAN1

Old P/N:USB-001MD-AX-U B:Black W:White

USB A Type Male Dip 90° 4P



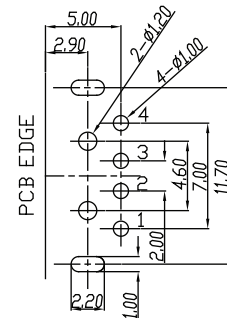
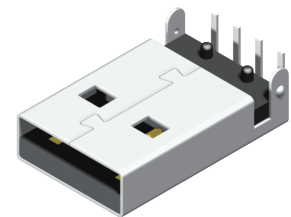
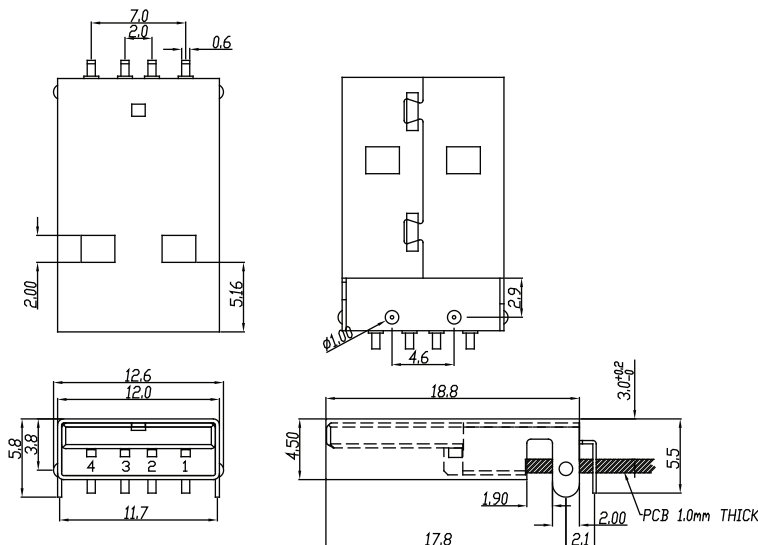
EDGE PCB
COMPONENT SIDE
(PCB LAYOUT)

No.	Name	Q'ty	Material	Remarks & Thickness	Finish
1	Housing	1	Nylon 9T G.F.		White/Black
2	Pin Term.	4	Copper Alloy T0.25	Ni:1~1.5u; Tin:3u. Gold:1~3u	Gold/Tin Plated

P/N.:5US2A10RM-104S0XUAN1

Old P/N:USB-001MDK-AX-U B:Black W:White

USB A Type Male Reverse Dip 90° 4P



COMPONENT SIDE
(PCB LAYOUT)

No.	Name	Material	Finish	Remark	Q'TY
1	Housing	Nylon 9T G.F.	Black/White		1
2	Pin Term.	Brass EH T=0.25 mm	Gold/Tin Plated	Gold:1~3u; Ni:40~60u; Tin:120u* (100% pure Tin of lead free plating)	4

P/N.:5US2A11RM-104S0XUAN1

Old P/N:USB-001MRD-AXS-U B:Black W:White

U SB Conn. Series



ROHS

CONNECTORS MANUFACTURER